



Russet Close, Alresford, Hampshire, SO24 9PS

£1,450 per month

- Three bedroom property
 - Family home
 - Excellent finish
 - Garden
 - Off road parking
- Available Early May 2024



ACCOMMODATION

Stunning three-bedroom family home in the heart of New Alresford. This new build home has been constructed to the highest of standards with spacious and modern accommodation. Including, three good-sized bedrooms, a family bathroom and an en-suite to the principal bedroom all with built-in wardrobes. On the ground floor, there is a spacious hallway with a downstairs cloakroom, open plan kitchen and L-shaped reception room. To the rear is a large garden with far-reaching views across Alresford, and to the front is off-street parking for two cars. The property is available in early May 2024 and is offered unfurnished.

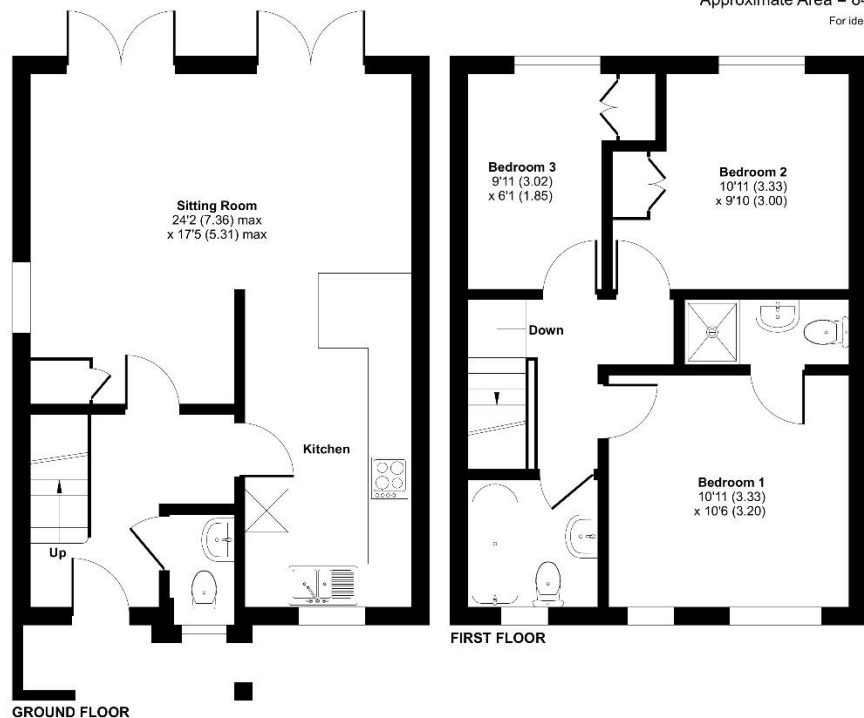
Disclaimer: Photos taken prior to the current tenancy and are for illustrative purposes only.

Security Deposit: £1,673.07 (Based on the current advertised rental)
Holding Deposit: £334.61 (Based on the current advertised rental)
Council Tax Band: C
Minimum Term: 12 months

Approximate Area = 842 sq ft / 78.2 sq m
For identification only - Not to scale



Energy Efficiency Rating		
	Current	Potential
Very energy efficient - lower running costs		
(92+) A		94
(81-91) B	82	
(69-80) C		
(55-68) D		
(39-54) E		
(21-38) F		
(1-20) G		
Not energy efficient - higher running costs		
England, Scotland & Wales	EU Directive 2002/91/EC	



This floor plan was constructed using measurements provided to © richcom 2024 by a third party. Produced for Charters Estate Agents Limited. REF: 1108295



Disclaimer Property Details: These particulars, whilst believed to be accurate are set out as a general outline only for guidance and do not constitute any part of an offer or contract. Intending purchasers should not rely on them as statements or representation of fact, but must satisfy themselves by inspection or otherwise as to their accuracy. We have not carried out a detailed survey nor tested the services, appliances and specific fittings. Room sizes should not be relied upon for carpets and furnishings. The measurements given are approximate. No person in this firm's employment has the authority to make or give any representation or warranty in respect of the property.