



96 Queens Road, Alton, Hampshire, GU34 1HY


Charters
ALTON

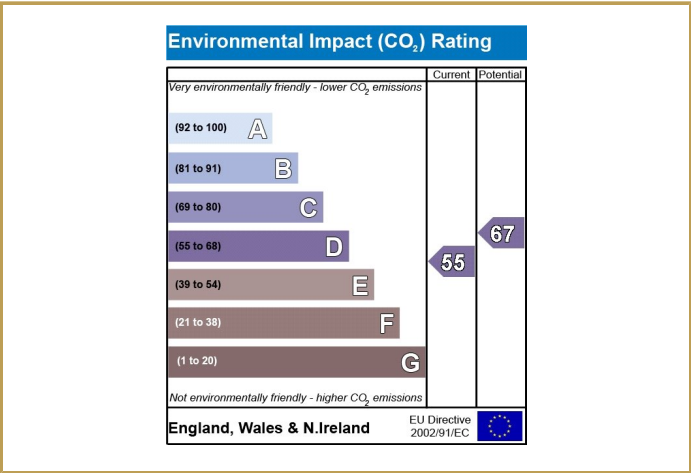
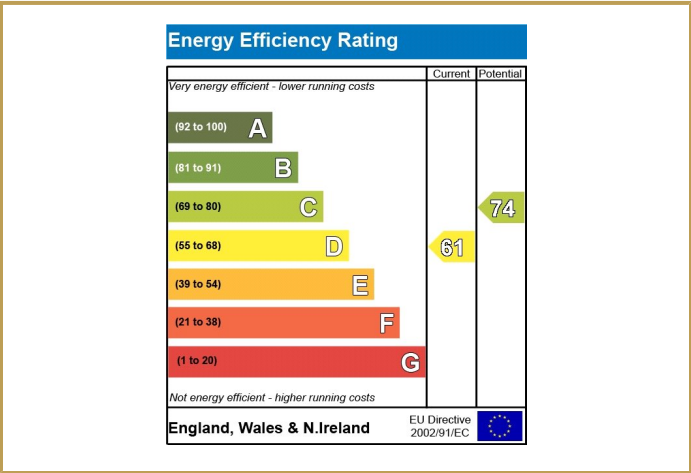
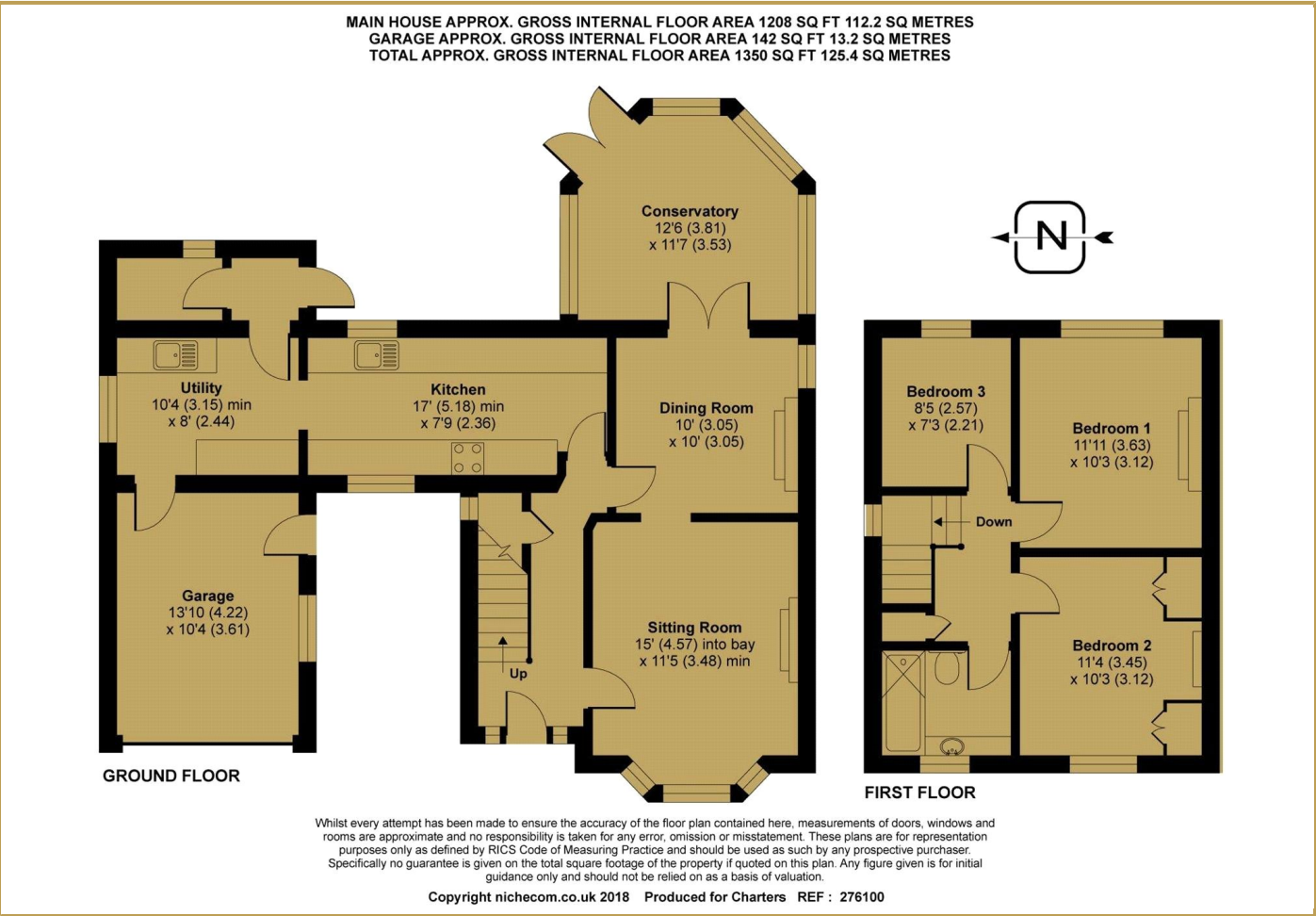
WINCHESTER | ALRESFORD | ALTON | FARNHAM | LONDON | CHANDLERS FORD  www.chartersestateagents.co.uk



Rare opportunity to create a fantastic family home in this highly desirable road within walking distance of the town centre and schools. This three bedroom character property sits on a larger than average plot with ample off road parking and internally retains many original features. The present vendors have owned the property for over 20 years and it is in need of modernisation, perfect for those who wish to put their own stamp on a property. The spacious ground floor accommodation includes a large galley style kitchen with separate utility with access to the integral garage. The sitting room with bay window leads into the dining room with wood burner and double doors into the conservatory with doors opening out onto the garden. Upstairs there are three good sized bedrooms and the family bathroom. Outside the large rear garden offers an array of fruit trees, a lawned area, vegetable patch, good sized greenhouse, pond and summer house. This is a truly fantastic opportunity to create your perfect family home. There is no onward chain.

Specification

- Character three bedroom family home
- In need of some updating
- Kitchen and utility
- Sitting room, dining room and conservatory
- Large well stocked garden
- Integral garage and ample parking



Situation

The Georgian market town of Alton has a wide range of shopping facilities, excellent road links with the A31 for Farnham, Guildford and Winchester, excellent secondary education and a sixth form college. There is a sports complex with swimming pool and a mainline rail station (London Waterloo) plus the popular Watercress Line runs close by with its enchanting steam locomotives.

Local Authority and school catchments

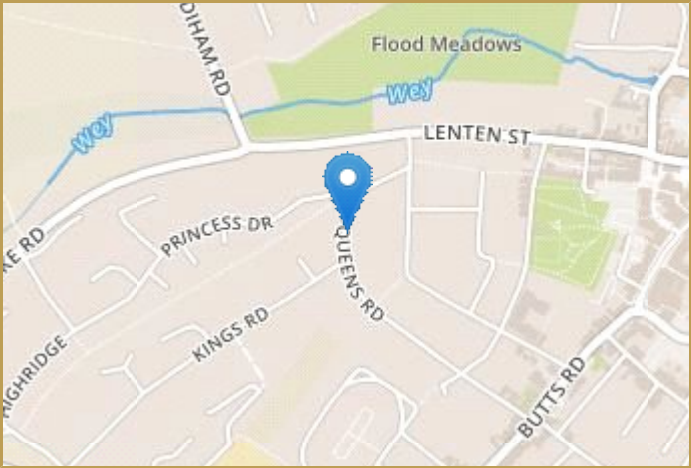
East Hampshire District Council, The Butts Primary School and Amery Hill School

Guide Price

Offers in Excess of £530,000

Tenure

Freehold





Disclaimer Property Details: These particulars, whilst believed to be accurate are set out as a general outline only for guidance and do not constitute any part of an offer or contract. Intending purchasers should not rely on them as statements or representation of fact, but must satisfy themselves by inspection or otherwise as to their accuracy. We have not carried out a detailed survey nor tested the services, appliances and specific fittings. Room sizes should not be relied upon for carpets and furnishings. The measurements given are approximate. No person in this firms' employment has the authority to make or give any representation or warranty in respect of the property.

Julius Caesar House, 66 High Street, Alton, Hampshire, GU34 1ET t: 01420 87666 e: alton@chartersestateagents.co.uk


Charter's
ALTON

WINCHESTER | ALRESFORD | ALTON | FARNHAM | LONDON | CHANDLERS FORD



www.chartersestateagents.co.uk