



Chalvington Road, Chandler's Ford, Hampshire, SO53 3EL



SPECIFICATION

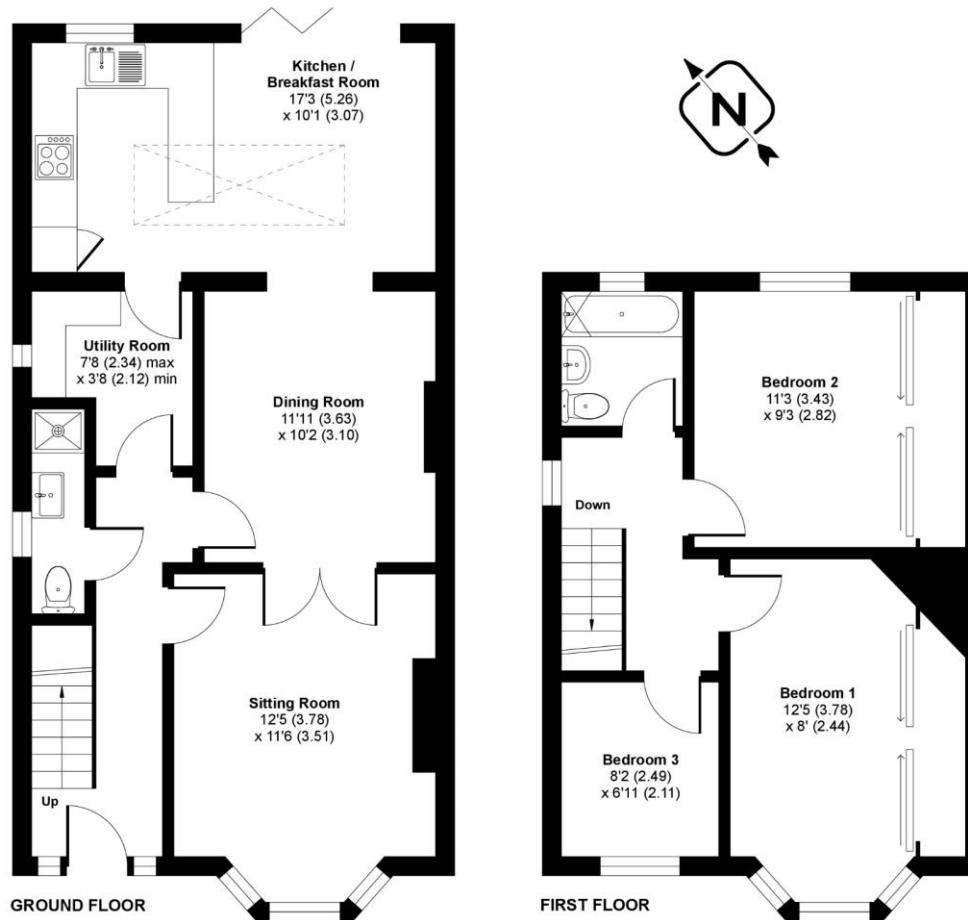
- Three bedroom detached property
- Located in the heart of Chandler's Ford
- Beautifully refurbished throughout
- Two reception rooms
- Large enclosed rear garden
- Off road parking
- No forward chain

ACCOMMODATION

Stunning and unique, this three bedroom detached home is located in a highly regarded area and has truly been a labour of love. The current owners have transformed this property with family living in mind. The open plan living area is a wonderful space for entertaining, with a large reception room opening to the dining area and flowing to the kitchen which is equipped in stylish white units and an array of integrated white goods. The ground floor is further complemented by a separate utility room and downstairs cloakroom. The upstairs continues to impress, with three good size bedrooms. The master bedroom has the benefit of built in storage and a beautiful bay window with all bedrooms served by the updated family bathroom offering feature tiling and high end fittings. Externally the home offers a low maintenance private rear garden and to the front of the home there is off road parking. This property is further offered for sale with no forward chain.

Approximate Area = 1096 sq ft / 102 sq m

For identification only - Not to scale



Energy Efficiency Rating		Current	Potential
Very energy efficient - lower running costs			
(92+)	A		
(81-91)	B		83
(69-80)	C		
(55-68)	D	65	
(39-54)	E		
(21-38)	F		
(1-20)	G		
Not energy efficient - higher running costs			
England, Scotland & Wales		EU Directive 2002/91/EC	



Floor plan produced in accordance with RICS Property Measurement Standards incorporating International Property Measurement Standards (IPMS2 Residential). © ncthecom 2021. Produced for Charters Estate Agents Limited. REF: 726535



SITUATION

Set within the popular area of Chandler's Ford, approximately a 15 minute drive away from the mesmerising cathedral city of Winchester and Southampton city. Chandlers Ford has a variety of shops, restaurants, traditional inns and schools. Winchester has many famous amenities and attractions. Communications are excellent with the M27, M3, A34, and A303 within easy reach. This provides access to London, New Forest and the South Coast.

LOCAL AUTHORITY

Eastleigh Borough Council

GUIDE PRICE

Guide Price £450,000

TENURE

Freehold



Your local multi-award winning agents



Disclaimer Property Details: These particulars, whilst believed to be accurate are set out as a general outline only for guidance and do not constitute any part of an offer or contract. Intending purchasers should not rely on them as statements or representation of fact, but must satisfy themselves by inspection or otherwise as to their accuracy. We have not carried out a detailed survey nor tested the services, appliances and specific fittings. Room sizes should not be relied upon for carpets and furnishings. The measurements given are approximate. No person in this firms' employment has the authority to make or give any representation or warranty in respect of the property.

13 Oakmount Road, Chandler's Ford, Eastleigh, Hampshire, SO53 2LG
chandlersford@chartersestateagents.co.uk

