



Romsey Road, Ower, Romsey, Hampshire, SO51 6AE





## SPECIFICATION

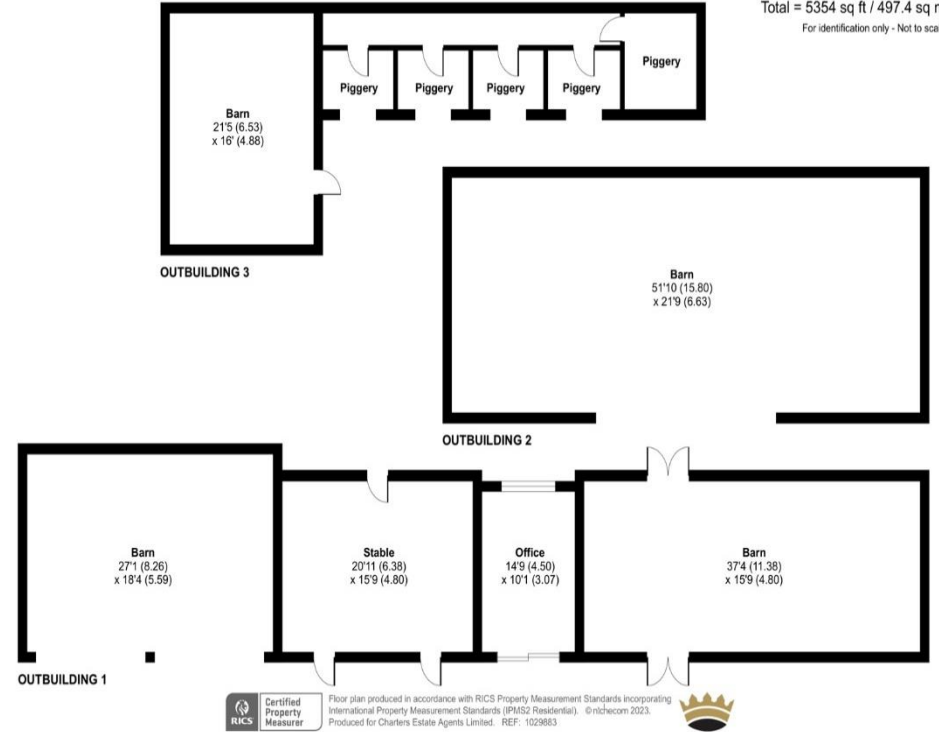
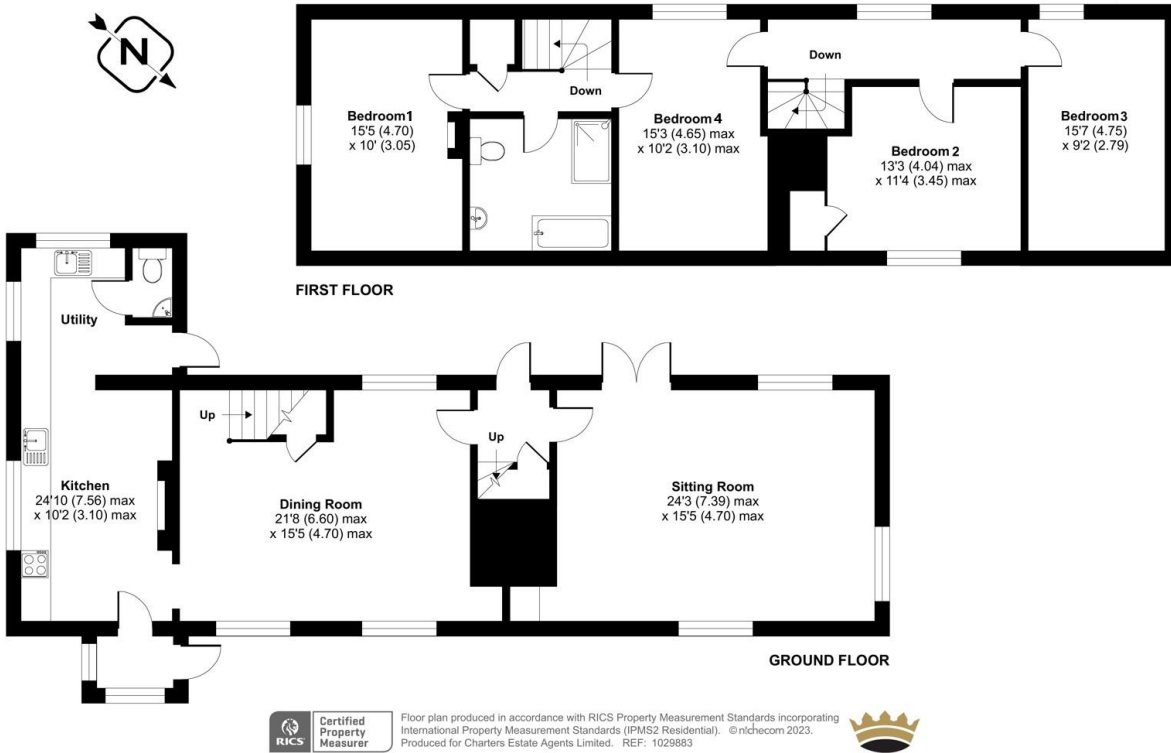
- Grade II listed former farmhouse
- Four total bedrooms
- Various outbuildings
- Extensive rear garden
- Driveway parking for multiple vehicles
- Available May 2024

## ACCOMMODATION

A charming Grade II listed former farmhouse offering a characterful blend of historic and contemporary living whilst nestled among the beautiful Romsey countryside. The setting is both picturesque and private with a generous rear garden and a natural hedgerow lining the property's boundary. A front porch leads into the ground floor living accommodation with a modern kitchen benefitting from ample storage and space for white goods; a useful utility room assists the kitchen. A formal dining room links socially with the kitchen and benefits from a snug seating area. A cosy sitting room offers a retreat from family life, with charming wooden beams and an open-plan fireplace. A cloakroom completes the ground floor. Four well-proportioned bedrooms are situated on the first floor with a modern family bathroom serving each bedroom. Externally, driveway parking for multiple vehicles is available with two barns for sheltered parking or storage. Various outbuildings include an old piggery, barn and office. The rear garden is extensive and predominantly laid to lawn.

Approximate Area = 1896 sq ft / 176.1 sq m  
 Outbuilding (s) = 3458 sq ft / 321.3 sq m  
 Total = 5354 sq ft / 497.4 sq m  
 For identification only - Not to scale

Approximate Area = 1896 sq ft / 176.1 sq m  
 Outbuilding (s) = 3458 sq ft / 321.3 sq m  
 Total = 5354 sq ft / 497.4 sq m  
 For identification only - Not to scale



## SITUATION

Situated within close proximity to commuter links such as the M27 and A36, Romsey lies on the east bank of the River Test at the lower end of the Test Valley, with the New Forest to the southwest, the ancient city of Winchester to the east and the major city and port of Southampton to the South. Romsey retains its regular street market as well as a thriving town centre with shops, restaurants, public houses, leisure facilities and historical sites including Broadlands House. At the centre of Romsey is the marketplace, town hall and the stunning Abbey. Steeped in history from its Saxon roots and centred upon its imposing and prepossessing abbey, Romsey is the loveliest of market towns which has retained its intrinsic 'village' charm. Its sophisticated eateries, boutique shopping and comfortable social life holds appeal for a wide range of prospective tenants. This is enhanced by its wealth of excellent local schooling within both the state and private sectors, which attracts many families to the area. Saturday morning strolls around Romsey with its variety of delicatessens and coffee shops serving gourmet breakfasts is an absolute treat.

## GUIDE PRICE

£3,250 per month

## DEPOSIT

Security Deposit: £3,750.00

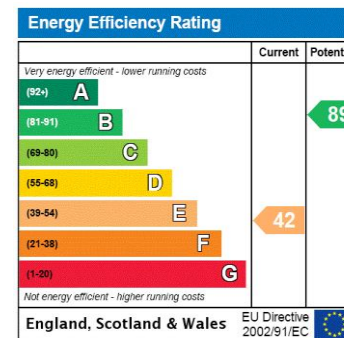
Holding Deposit: £750.00

(based on the advertised rental)

## LOCAL AUTHORITY

Test Valley Borough Council

Council Tax Band: G



## MINIMUM TERM

12 Months





Disclaimer Property Details: These particulars, whilst believed to be accurate are set out as a general outline only for guidance and do not constitute any part of an offer or contract. Intending purchasers should not rely on them as statements or representation of fact, but must satisfy themselves by inspection or otherwise as to their accuracy. We have not carried out a detailed survey nor tested the services, appliances and specific fittings. Room sizes should not be relied upon for carpets and furnishings. The measurements given are approximate. No person in this firms' employment has the authority to make or give any representation or warranty in respect of the property.