





ACCOMMODATION

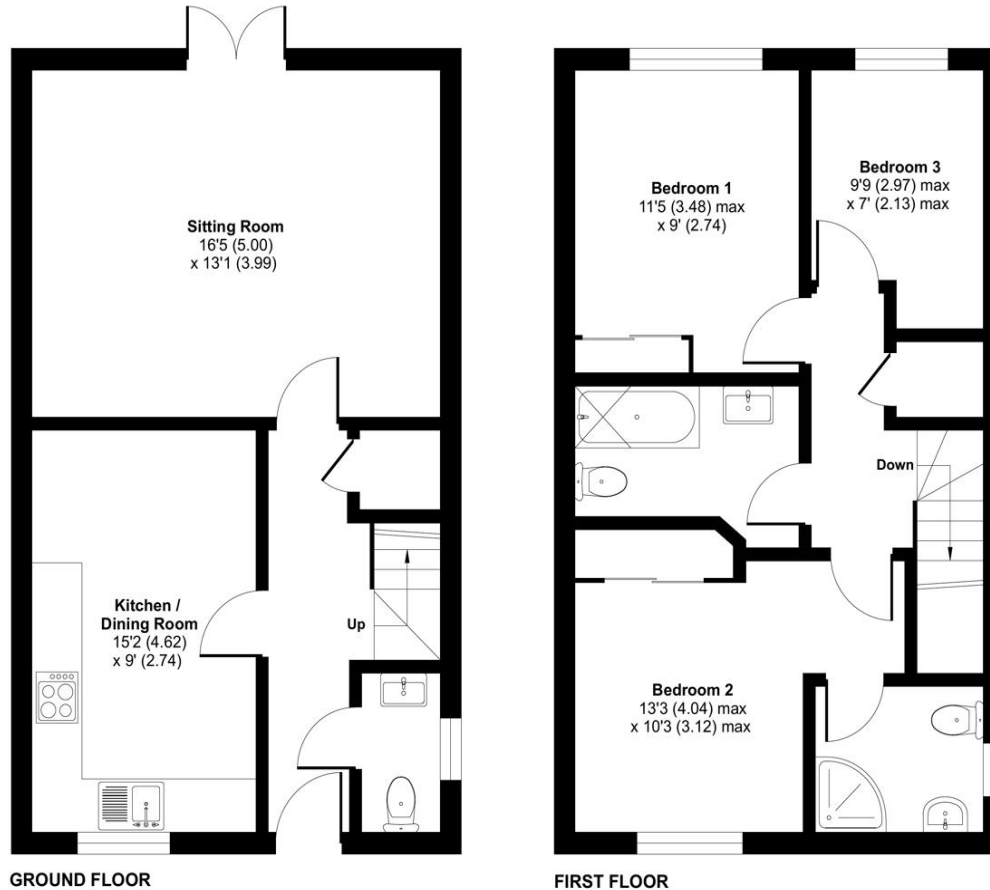
Plot 9 is a charming three-bedroom semi-detached family home, entered via a welcoming entrance hallway which offers access to the well-proportioned living accommodation. The kitchen/breakfast room is fitted with a stunning range of wall and base units with complementing work surfaces and benefits from an excellent range of fitted appliances, including an electric fan oven, fridge/freezer, dishwasher and induction hob. The sitting room is located to the rear of the property and offers a lovely space to relax with bi-folding doors leading out onto the patio and the garden beyond; a guest cloakroom completes the ground floor. The first floor continued to impress with a stylish en-suite shower room to the principal bedroom and generous family bathroom for the remaining two bedrooms. Externally, the pleasant rear garden is mainly laid to lawn with a patio terrace, ideal for al fresco dining in the Summer months and there is a wonderful double car barn for parking.

****Please note that the internal images are from another Hartly Homes Development and therefore representative. Whilst every attempt has been made to ensure the accuracy of the floorplan, measurements are approximate and therefore subject to change. ****



Approximate Area = 944 sq ft / 87.7 sq m

For identification only - Not to scale



Floor plan produced in accordance with RICS Property Measurement Standards incorporating International Property Measurement Standards (IPMS2 Residential). © nichecom 2023. Produced for Charters Estate Agents Limited. REF: 994879



SITUATION

The village of East Wellow enjoys a strong community spirit and excellent access to Salisbury and the M27 via the nearby A36. It hosts a variety of amenities including a pharmacy, butchers, newsagent and public house. It is also well provided for in sporting facilities with a local tennis club, golf course and cricket ground, whilst enjoying the close proximity of the historic New Forest, highly regarded schooling both state and private are nearby with excellent commuter links by road and rail with airports at Southampton and Bournemouth.

THE DEVELOPMENT

Home Farm is a traditional new development of seven sensitively converted and renovated properties and sixteen new builds, ranging from two-bedroom apartments to four-bedroom detached houses, set in a delightful location on the outskirts of Embley Park. This impressive development is built by Hartly Homes and located in the sought-after village of East Wellow, which is conveniently located just five miles from the market town of Romsey and not far from The New Forest National Park, which offers over 140 miles of tracks and footpaths. You'll find plenty of long-distance routes, short walks and easy to follow signed routes, adventuring through ancient woodlands, quaint pretty villages and across open moorland.



HOME FARM

Embley Park | Romsey

SPECIFICATION

- State of the art energy-saving air source heating
- Underfloor heating to ground floor, radiators to first
- TV aerial points to all bedrooms & receptions
- Properties pre-wired for Sky Q
- Generous number of power points throughout
- Luxurious kitchen from specialist kitchen supplier
- Full suite of quality kitchen appliances including electric fan oven, fridge/freezer, dishwasher, induction hob, cooker hood
- Bathrooms with Porcelanosa tiling
- Quality white sanitary ware
- Ceramic tiled floor to kitchens and bathrooms
- Contemporary staircase - painted spindles & ash handrail
- White satin architraves & skirting
- Generous patio areas to rear of each property
- Fenced enclosed rear garden
- Outside water tap & external power socket
- Fitted burglar alarm system
- Smoke alarms hard-wired with battery

LOCAL AUTHORITY

Test Valley Borough Council

GUIDE PRICE

Asking Price £425,000

TENURE

Freehold