



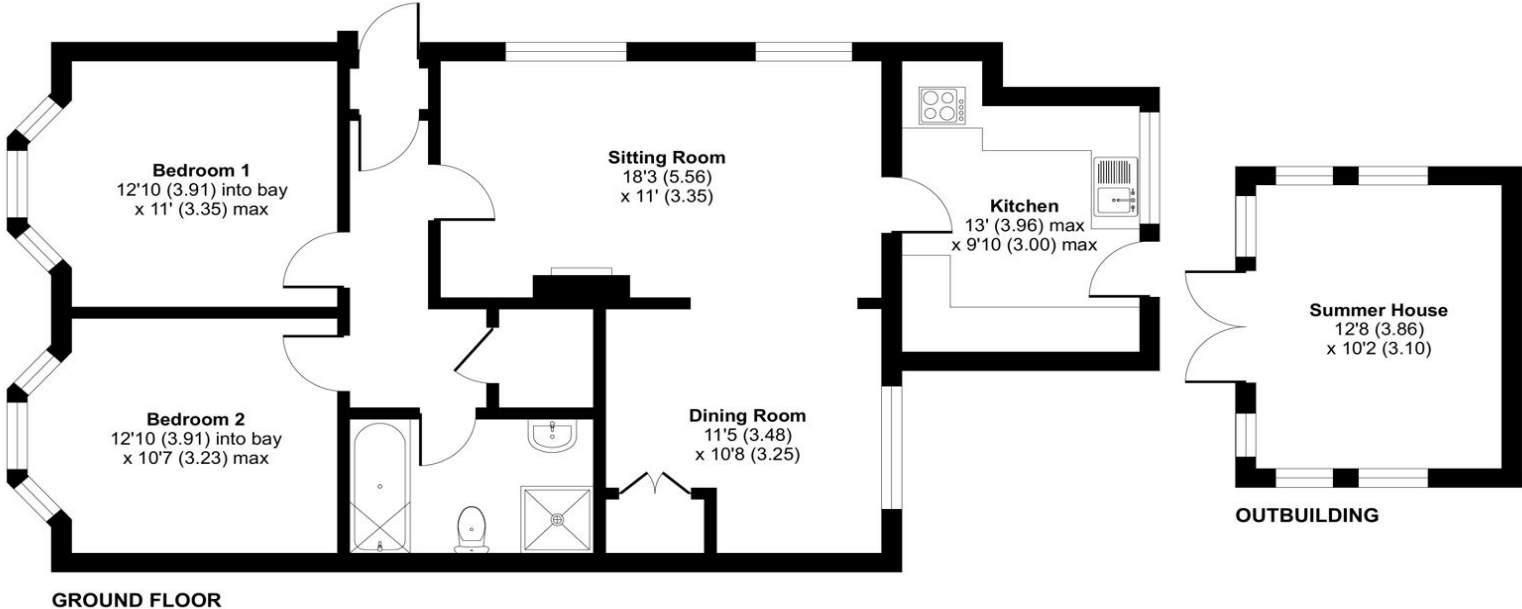
Belmont Road, Chandler's Ford, Eastleigh, Hampshire, SO53 3EU



ACCOMMODATION

A Fantastic two double bedroom home occupying a quiet and convenient position located in the heart of Chandlers Ford. Boasting desirable features with bay windows and high ceilings which create light and airy living throughout. The well-portioned accommodation is entered via the welcoming hallway which guides you to all the principal rooms. The sitting room, with a feature fireplace, seamlessly leads into the delightful dining room perfect for entertaining. A traditional kitchen includes a range of wall and base units with views over the garden beyond and a door opening out onto the private enclosed garden. The accommodation continues to delight with two double bedrooms all serviced by the family bathroom. Continuing outside, you will gravitate towards the private enclosed garden which has been well maintained with a mix of mature borders and block paved patio perfect for al fresco dining. A summer house completes the garden. To the front of this home you will find a well-established block paved driveway affording plenty of parking.

Approximate Area = 883 sq ft / 82 sq m
 Outbuilding = 129 sq ft / 12 sq m
 Total = 1012 sq ft / 94 sq m
 For identification only - Not to scale



Energy Efficiency Rating		Current	Potential
Very energy efficient - lower running costs			
(92+)	A		
(81-91)	B		82
(69-80)	C		
(55-68)	D	62	
(39-54)	E		
(21-38)	F		
(1-20)	G		
Not energy efficient - higher running costs			
England, Scotland & Wales		EU Directive 2002/91/EC	



Floor plan produced in accordance with RICS Property Measurement Standards incorporating International Property Measurement Standards (IPMS2 Residential). © n'checon 2023. Produced for Charters Estate Agents Limited. REF: 1001524



SITUATION

Set within the popular area of Chandler's Ford, approximately a 15-minute drive from the mesmerising cathedral city of Winchester and Southampton city. Chandler's Ford has a variety of shops, restaurants, traditional inns and schools. Winchester has many famous amenities and attractions. Communications are excellent with the M27, M3, A34, and A303 within easy reach and only a few minutes drive away. This provides access to London, New Forest and the South Coast. Set within the popular area of Chandler's Ford, approximately a 15-minute drive from the mesmerising cathedral city of Winchester and Southampton city. Chandler's Ford has a variety of shops, restaurants, traditional inns and schools. Winchester has many famous amenities and attractions. Communications are excellent with the M27, M3, A34, and A303 within easy reach and only a few minutes drive away. This provides access to London, New Forest and the South Coast.



SPECIFICATION

- Two double bedroom bungalow
- Requires modernisation
- Family bathroom
- Mature rear garden
- Driveway parking
- No chain

LOCAL AUTHORITY

Eastleigh Borough Council
Council Tax Band C

GUIDE PRICE

£325,000

TENURE

Freehold