

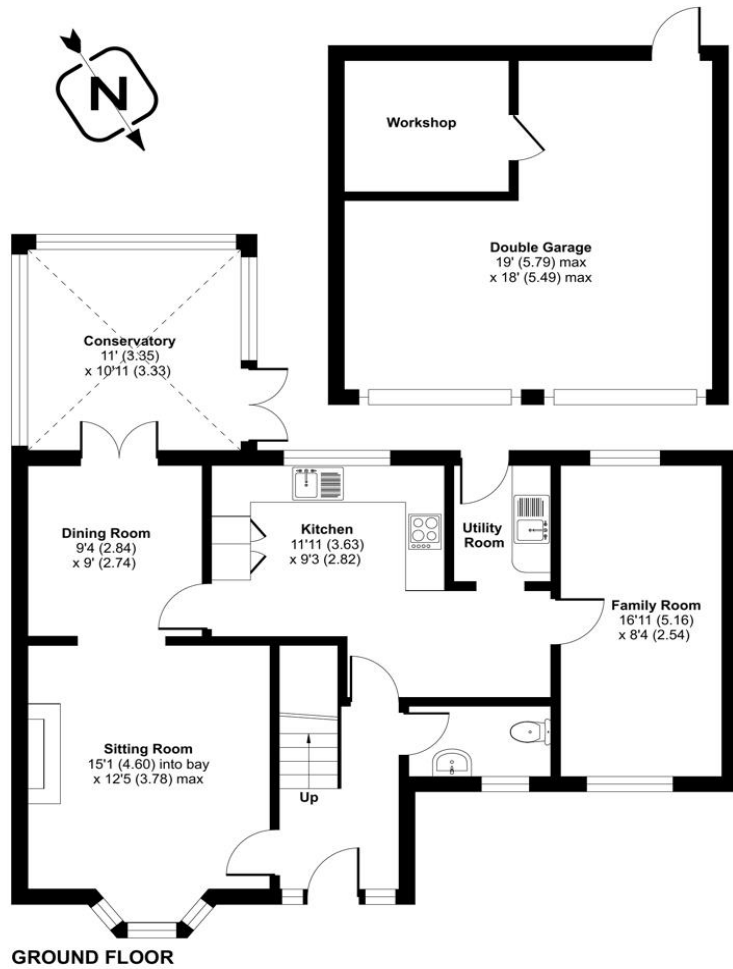


Blencowe Drive, Chandler's Ford, Eastleigh, Hampshire, SO53 4LZ

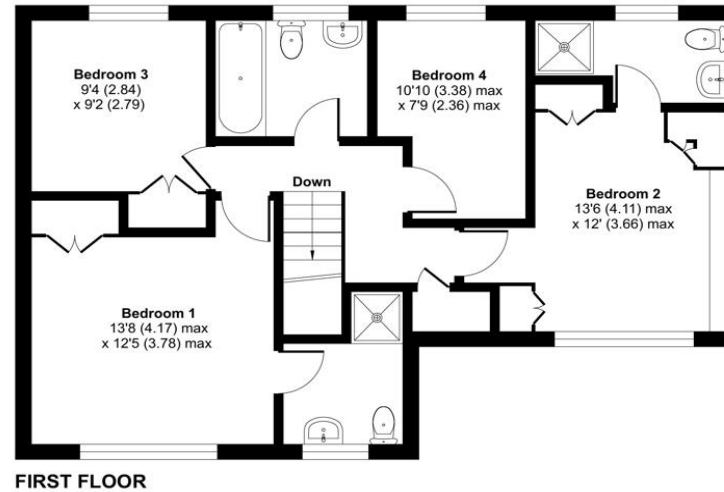


ACCOMMODATION

Nestled in a tranquil neighbourhood, this impressive four-bedroom detached home stands as a testament to luxurious living. With its spacious interiors, amenities, and charming outdoor spaces, it offers a perfect balance of comfort and elegance. Upon entering, you're welcomed into the large entrance hall with doors leading to the sitting room, downstairs cloakroom and kitchen. The sitting room with a feature fireplace leads to the dining area with doors to the conservatory and kitchen. The kitchen is a large social space with a utility area and an additional family room leading off from it. Upstairs there are four bedrooms, with ensuite shower rooms to the principal and second bedrooms, with the other two bedrooms being serviced by a large family bathroom. Built-in storage solutions throughout the first floor add a level of functionality. To the rear of the property is a well-maintained enclosed garden with a southerly aspect. To the front, there is a double driveway and an additional parcel of land purchased by the current owners. Located ideally in a desirable neighbourhood, this home provides easy access to a wealth of amenities including schools, shops, parks and more. With its proximity to major transport links, it combines the tranquillity of suburban life and urban convenience.



Approximate Area = 1592 sq ft / 147.9 sq m
 Garage = 342 sq ft / 31.7 sq m
 Total = 1934 sq ft / 179.6 sq m
 For identification only - Not to scale



Energy Efficiency Rating		Current	Potential
Very energy efficient - lower running costs			
(92+)	A		
(81-91)	B		81
(69-80)	C	71	
(55-68)	D		
(39-54)	E		
(21-38)	F		
(1-20)	G		
Not energy efficient - higher running costs			
England, Scotland & Wales		EU Directive 2002/91/EC	



Floor plan produced in accordance with RICS Property Measurement Standards incorporating International Property Measurement Standards (IPMS2 Residential). © n1checom 2024. Produced for Charters Estate Agents Limited. REF: 1093664



SITUATION

Chandler's Ford is a popular Hampshire town with a variety of shops, restaurants, traditional inns and schools with Chilworth golf course also within easy reach. It is approximately a 15-minute drive to Winchester and a 17-minute drive to Southampton, both cities have an extensive range of facilities. Communications are excellent with the M3 and M27 nearby and the railway station has links to Winchester and Southampton; London Waterloo is 57 minutes from Winchester and 65 minutes from Southampton Parkway.



SPECIFICATION

- Four-bedroom executive home
- Detached double garage
- Tranquil cul-de-sac position
- Rear garden with a southerly aspect
- Family bathroom and two ensuite shower rooms
- Knightwood Park location

LOCAL AUTHORITY

Test Valley Borough Council
Council Tax Band: F

ASKING PRICE

£675,000

TENURE

Freehold