

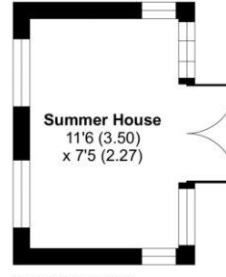
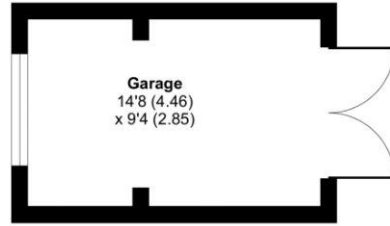


Western Road, Chandler's Ford, Hampshire, SO53 5DB



ACCOMMODATION

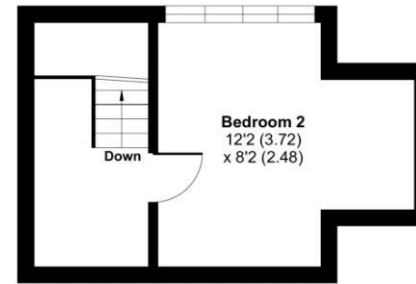
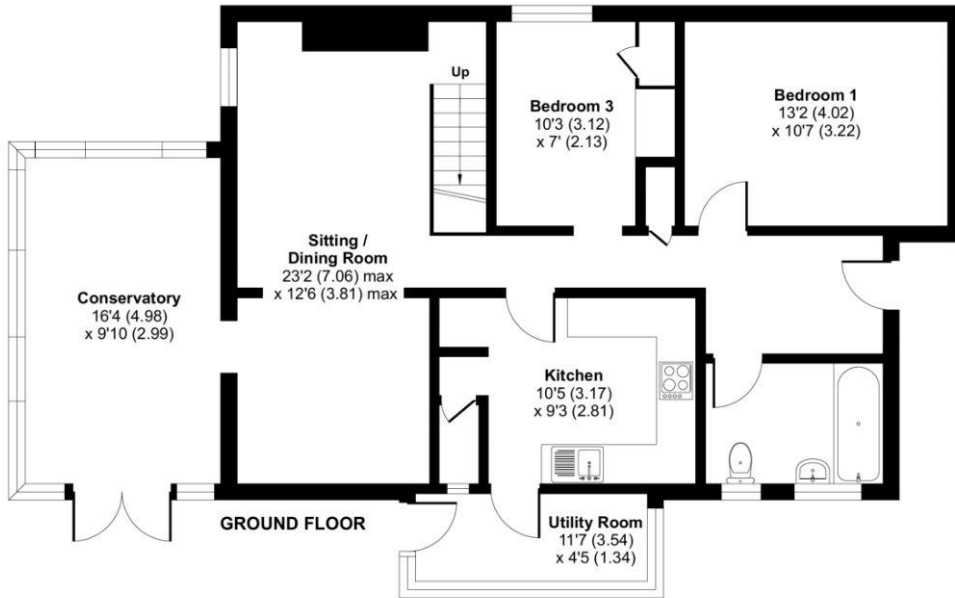
Nestled in a desirable and well-established area within Hiltingbury, this traditional chalet bungalow presents a rare opportunity for those looking to create their dream home. In need of some modernisation, the property offers potential and a wealth of charming features with light and bright accommodation throughout. Inside, you'll find three well-appointed bedrooms, ideal for family living or versatile use, and a family bathroom designed to accommodate all your needs. The home boasts a spacious conservatory, perfect for relaxing or entertaining while enjoying views of the garden. The exterior is equally impressive, with a large, mature rear garden that provides a peaceful retreat. A standout feature is the professionally built cabin, offering endless possibilities as a home office, studio, or additional leisure space. The property also benefits from driveway parking, ensuring convenience and ease.



Approximate Area = 1219 sq ft / 113.2 sq m
 Garage = 137 sq ft / 12.7 sq m
 Outbuilding = 86 sq ft / 7.9 sq m
 Total = 1442 sq ft / 133.8 sq m
 For identification only - Not to scale



OUTBUILDING



FIRST FLOOR

GROUND FLOOR

Energy Efficiency Rating		Current	Potential
Very energy efficient - lower running costs			
(92+)	A		
(81-91)	B		
(69-80)	C		79
(55-68)	D	55	
(39-54)	E		
(21-38)	F		
(1-20)	G		
Not energy efficient - higher running costs			
England, Scotland & Wales		EU Directive 2002/91/EC	

Floor plan produced in accordance with RICS Property Measurement 2nd Edition, Incorporating International Property Measurement Standards (IPMS2 Residential). © nichecom 2024. Produced for Charters Estate Agents Limited. REF: 1204787



Scan the QR code to find out more information about this property.

SITUATION

Chandler's Ford is a popular Hampshire town with a variety of shops, restaurants, traditional inns and with Chilworth golf course also within easy reach. The local catchment schools are Chandler's Ford Infant Scholl, Merdon Junior School and the sought-after Thornden School. Independent schools include Sherbourne House, The Pilgrims' School, Princes Mead, Twyford School, St Swithun's School and Winchester College. Coast and country lifestyle pursuits are all within striking distance as the city is well placed for the South Downs National Park and The New Forest. It is approximately a 15-minute drive to Winchester and a 17 minute drive to Southampton, both cities have an extensive range of facilities. Communications are excellent with the M3 and M27 nearby and the railway station has links to Winchester and Southampton; London Waterloo is approximately 57 minutes from Winchester and approximately 65 minutes from Southampton Parkway.



SPECIFICATION

- Traditional chalet bungalow
- Requires modernisation
- Three well-appointed bedrooms
- Family bathroom
- Conservatory
- Sought after location
- Large mature rear garden with professional cabin
- Driveway parking

LOCAL AUTHORITY

Eastleigh Borough Council
Council Tax Band E

OFFERS OVER £650,000

TENURE

Freehold