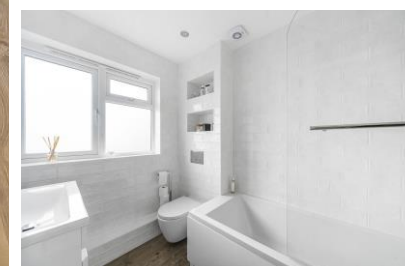


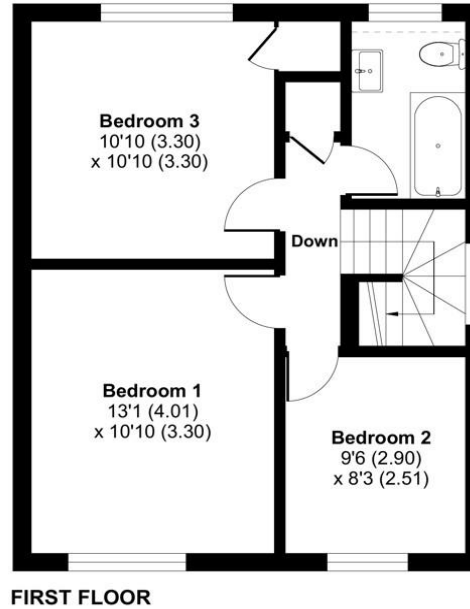
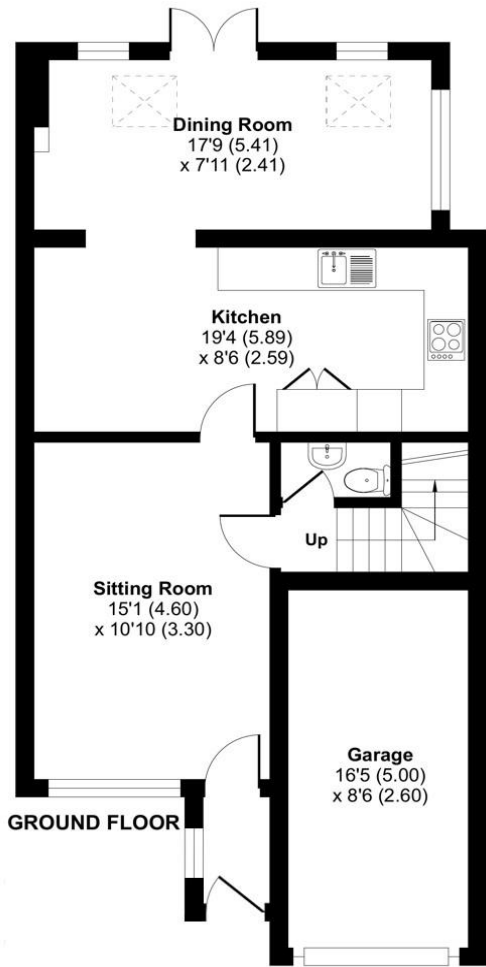


Hurst Close, Valley Park, Chandler's Ford, Hampshire, SO53 3PA



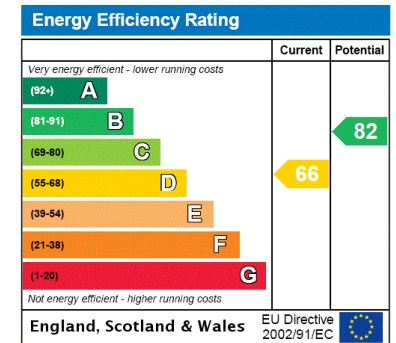
ACCOMMODATION

Modern and contemporary home situated within the sought after area of Valley Park with high-quality designs throughout. Occupying a quiet and convenient position this substantial property encapsulates the true essence of a family home and is a fine example of extended modern living. Designed to create light and airy accommodation throughout this stylish home has the finest fixtures and fittings and has been carefully crafted by the current owners to create the perfect family space. The accommodation includes a well-appointed sitting room which has a fresh design with doors leading to the impressive kitchen/dining room, finished to the highest standard and fully fitted with integrated appliances and clever storage solutions, along with feature French doors to the outside dining area. This unique space provides fantastic room for entertaining your whole family and really is the hub of the home. Completing the ground floor is a convenient guest cloakroom and useful utility area at the rear of the integral garage. Upstairs on the first floor are three well-appointed bedrooms which are all served by the luxurious family bathroom. Externally, the private enclosed rear garden has been well maintained, mainly laid to lawn with an elegant patio terrace, the perfect place for an immersive dining experience. To the front of the home is ample drive way parking and a single garage.



Approximate Internal Area = 1036 sq ft / 96.2 sq m
 Limited Use Area(s) = 2 sq ft / 0.2 sq m
 Garage = 133 sq ft / 12.4 sq m
 Total Internal Area = 1171 sq ft / 108.8 sq m
 For identification only - Not to scale

Denotes restricted head height



Floor plan produced in accordance with RICS Property Measurement Standards incorporating International Property Measurement Standards (IPMS2 Residential). © nichecom 2024. Produced for Charters Estate Agents Limited. REF: 1103554



SITUATION

Chandler's Ford is a popular Hampshire town with a variety of shops, restaurants, traditional inns with a number of high quality public and private educational facilities within easy reach catering for all ages, including St Francis Primary and Junior School, Sherborne House and Southampton and Winchester Universities. Coast and country lifestyle pursuits are all within striking distance as the town is well placed for the South Downs National Park and The New Forest. It is approximately a 15-minute drive to Winchester and a 17-minute drive to Southampton, both cities have an extensive range of facilities. Communications are excellent with the M3 and M27 nearby and the railway station has links to Winchester and Southampton; London Waterloo is 57 minutes from Winchester and 65 minutes from Southampton Parkway. Southampton Airport is within close proximity and provides transport links to many cities within the UK and Europe.



SPECIFICATION

- Extended family home
- Three well-appointed bedrooms
- Impressive kitchen
- Modern family bathroom
- Private enclosed garden
- Garage and driveway parking

LOCAL AUTHORITY

Test Valley Borough Council
Council Tax Band: C

GUIDE PRICE

Offers in excess of £425,000

TENURE

Freehold