



Lewis Road, North Stoneham Park, North Stoneham, Hampshire, SO50 9RJ

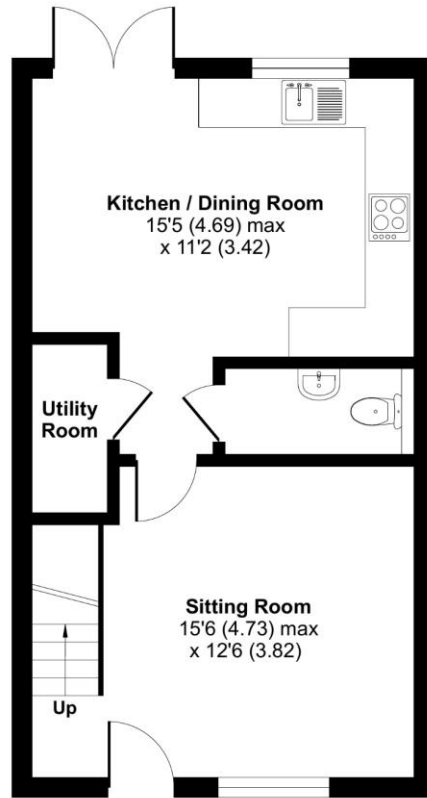


ACCOMMODATION

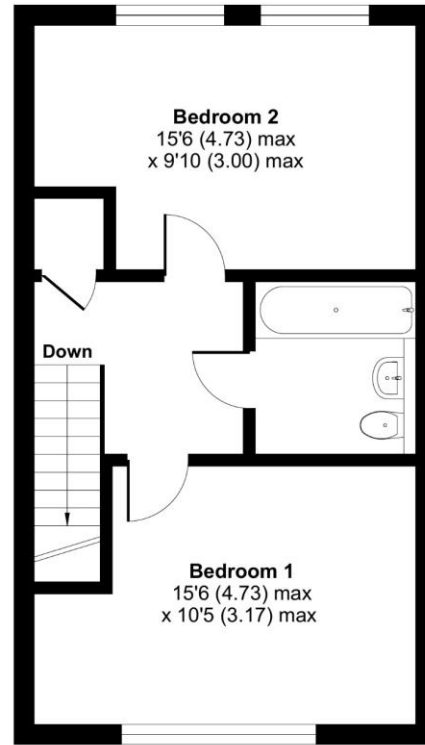
This excellent two-bedroom end of terrace home is located in a delightful position within the popular North Stoneham Park development. The property has been finished and maintained to an exceptional standard throughout, making it ready to move into straight away. As soon as you arrive, you will notice the home occupies a lovely position with plenty of space all around and parking for two vehicles. Upon entering, you are welcomed into the spacious sitting room with stairs to the first floor and door to the kitchen/dining room. There are another two doors along, one providing access to the guest cloakroom and the other to a utility space, perfect for hiding away the unsightly appliances. The generous kitchen/dining room benefits from superb natural light and is a perfect space to relax or entertain in with French doors leading to the garden and sleek, modern cabinetry only enhances the 'new' feeling. The first floor continues to impress with two double bedrooms, both benefitting from plenty of space for storage. Both bedrooms are served by a well-appointed family bathroom. Externally the rear landscaped garden is well-proportioned and easy to maintain. This property would be suited to first time buyers, families and investors alike.

Approximate Area = 868 sq ft / 80.6 sq m

For identification only - Not to scale



GROUND FLOOR



FIRST FLOOR



Energy Efficiency Rating		
	Current	Potential
Very energy efficient - lower running costs		
(92+) A		
(81-91) B	86	88
(69-80) C		
(55-68) D		
(39-54) E		
(21-38) F		
(1-20) G		
Not energy efficient - higher running costs		
England, Scotland & Wales	EU Directive 2002/91/EC	



Scan the QR code to find out more information about this property.



Floor plan produced in accordance with RICS Property Measurement Standards incorporating International Property Measurement Standards (IPMS2 Residential). © nlshecom 2024. Produced for Charters Estate Agents Limited. REF: 1195093



SITUATION

Occupying the site of a vast deer park set within walking distance of Eastleigh's town centre, North Stoneham Park is perfectly situated with excellent transport links and local amenities, including a primary school, nursery, community centre, leisure, retail and sporting facilities - all set within the Park development.



SPECIFICATION

- Excellent starter home
- Extremely well-presented throughout
- Two double bedrooms
- Well-appointed family bathroom
- Kitchen/dining room with French doors to the outside
- Stylish fitted kitchen
- Landscaped rear garden
- Allocated parking for two cars

LOCAL AUTHORITY

Eastleigh Borough Council
Council Tax Band C

GUIDE PRICE £325,000

TENURE

Freehold