



Apartment 18 Glebe Court, Glebe Court, Romsey, Hampshire, SO51 0ES





## ACCOMMODATION

A superbly positioned retirement complex of 20 one-bedroom and 16 two-bedroom apartments, situated within leafy surroundings with amenities close-by.

Apartment 18 is a spacious one-bedroom apartment situated on the first floor and has access to a private balcony via a large living room. The bedroom features a walk-in wardrobe and the apartment benefits from added storage in the utility cupboard.

In addition to beautiful luxurious apartments, this development will benefit from an on-site House Manager so residents can receive flexible care and support, as well as a 24 hour emergency call system for added peace of mind. All external property maintenance including gardening and window cleaning will be taken care of, leaving you more time to enjoy your retirement to the full.

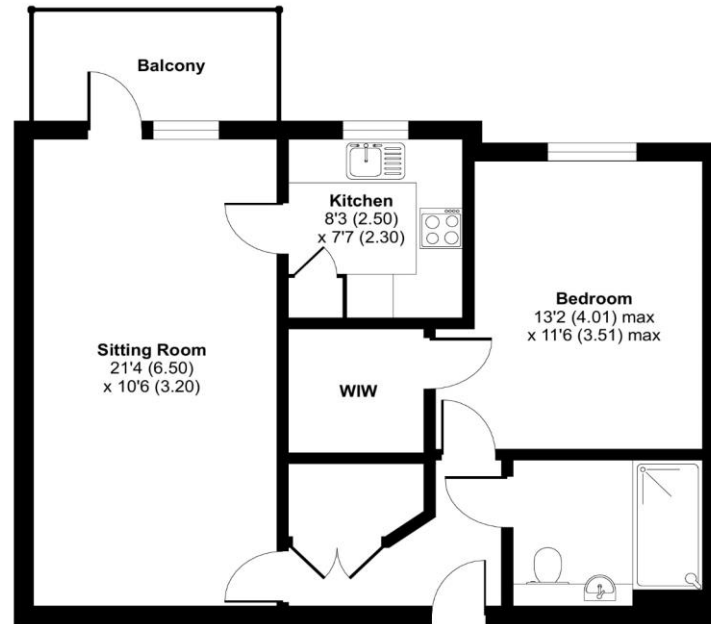
A stunning landscaped garden will give homeowners a scenic place in which to unwind and there will be a beautiful communal lounge and on-site guest suite meaning that family and friends can enjoy a most comfortable stay.





Approximate Area = 605 sq ft / 56.2 sq m

For identification only - Not to scale



FIRST FLOOR



Scan the QR code to find out more information about this property.



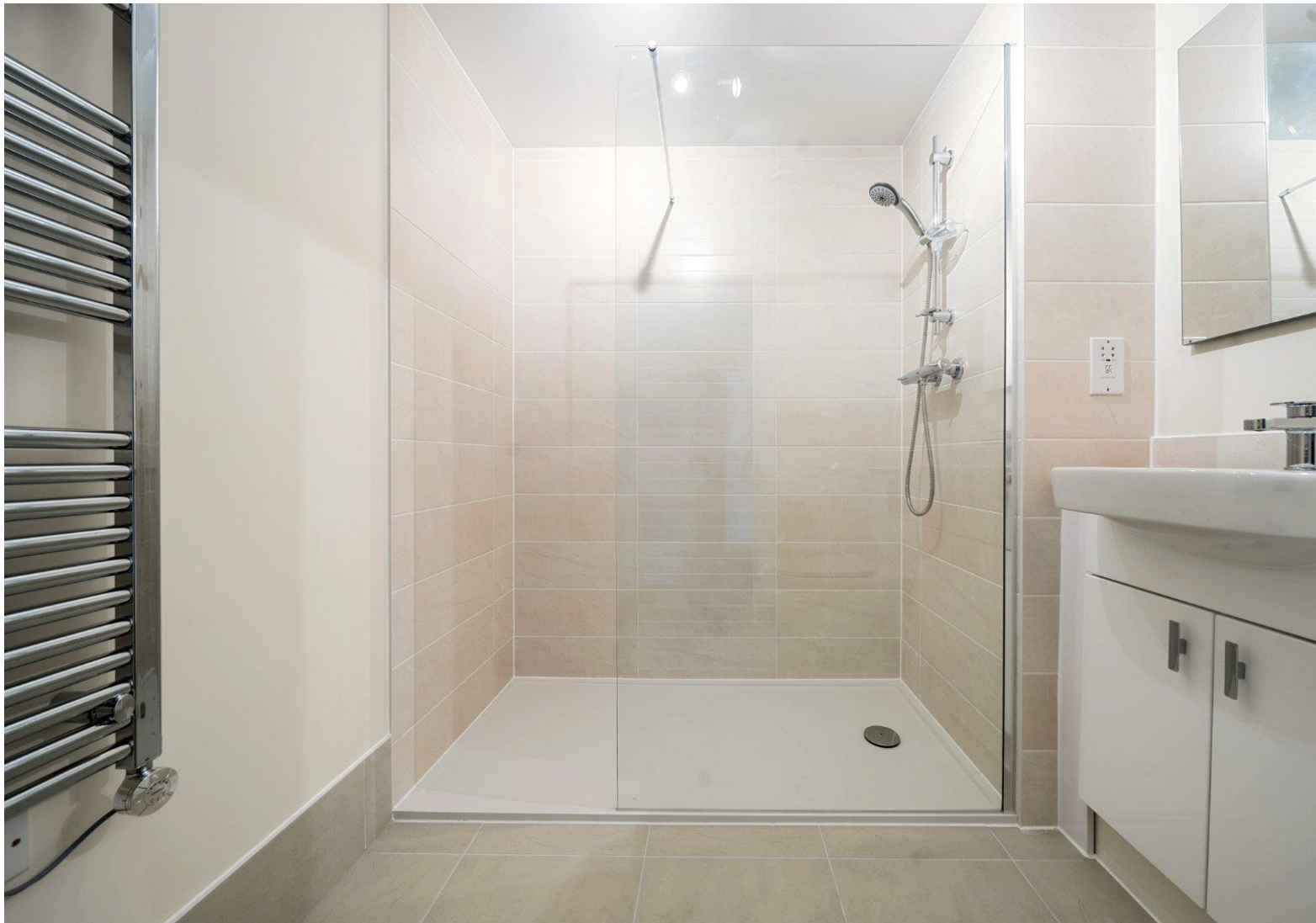
Floor plan produced in accordance with RICS Property Measurement 2nd Edition, Incorporating International Property Measurement Standards (IPMS2 Residential). Produced for Charters Estate Agents Limited. REF: 1207602

© n|checon 2024.



## SITUATION

This location enables convenient access to local shops and amenities. In addition, Romsey (2.5 miles) offers a wide choice of boutique eateries and High Street brands for a perfect day or evening out in the town. Nearby Broadlands House is just south of the town centre and is the former home of Lord Palmerston, with extensive parklands open to the public. For longer countryside adventures the bordering River Test offers an abundance of scenic walks and breath-taking views across Romsey Abbey. Fishlake Meadows nature reserve, Brentry Woodland, Hillier Arboretum and the Sir Harold Hillier gardens are all nearby and there are excellent transport links to Winchester, Southampton and Bournemouth and connecting to the rest of the South from the M27 and M3.



#### **SPECIFICATION**

- Retirement Apartment
- Communal Lounge
- Guest Suite
- On-Site House Manager
- Landscaped Gardens
- 24-hour emergency call system
- Private Parking
- Wheelchair Access
- Lifts (to all floors)
- Pets Allowed
- Mobility Scooter Room
- Local Amenities within Walking Distance

#### **LOCAL AUTHORITY**

Test Valley Borough Council

Council Tax Band - TBC

**ASKING PRICE £325,000**

#### **TENURE**

Leasehold with a term of 999 years from and including 03/11/2022.

The Service Charge is £4,003.79 for a one-bedroom apartment and £6,005.66 for a two-bedroom apartment.