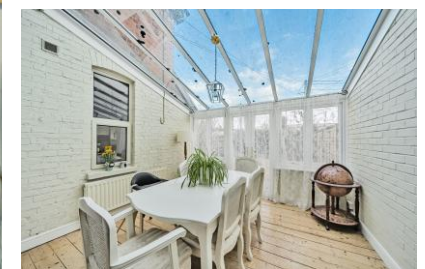




Railway Cottages, Tate Road, Redbridge, Southampton, Hampshire, SO15 0NL

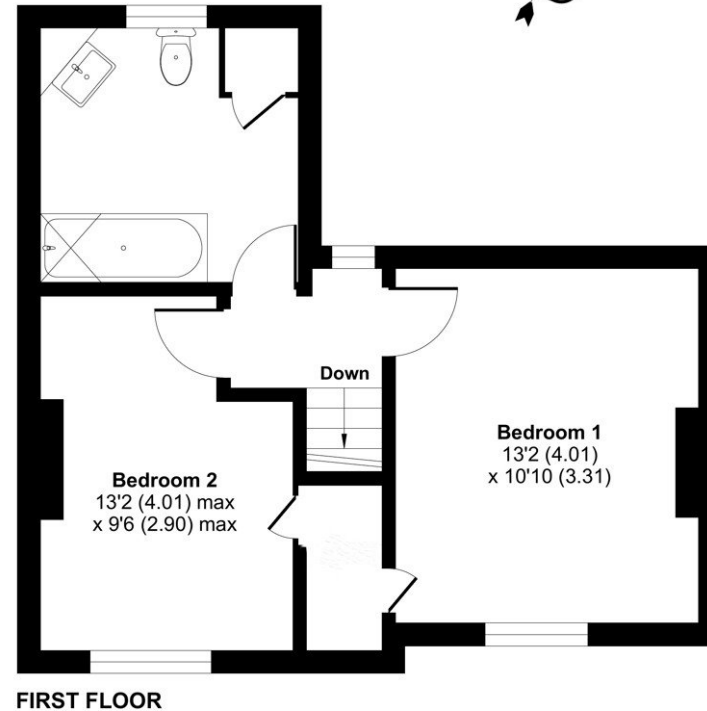
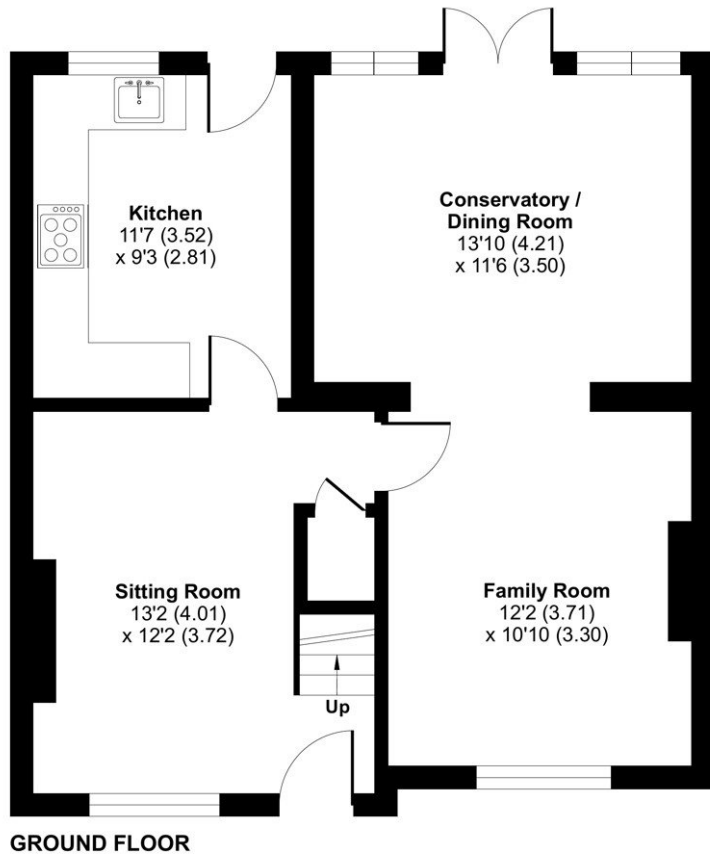


ACCOMMODATION

Located in the Old Redbridge district of the city and within easy reach of the M27 motorway network, the city centre, and the New Forest National Park is this charming and characterful two bedroom cottage. Offering generous proportions believed to date back to the late 1800's and offers the lucky new owners a generously sized home with many original style features and detailing. The home benefits from an allocated parking space and an area laid to hardstanding to the front providing the potential for additional parking. The accommodation on the ground floor comprises of the lounge to the front of the home with stripped wooden floor boards and open fireplace, a second reception room also to the front of the property and again with stripped wooden floorboards and open fireplace. A bright and sunny conservatory to the rear overlooking the garden and the farmhouse style kitchen with Belfast sink. The first floor provides access to the loft space and the two generously sized double bedrooms both of which are served by the stylish four piece family bathroom. To the rear of the home there is a private and enclosed flat child and pet friendly garden of good size for all to enjoy during the summer months.

Approximate Area = 982 sq ft / 91.2 sq m

For identification only - Not to scale



Energy Efficiency Rating		Current	Potential
Very energy efficient - lower running costs			
(92+)	A		
(81-91)	B		83
(69-80)	C		
(55-68)	D	65	
(39-54)	E		
(21-38)	F		
(1-20)	G		
Not energy efficient - higher running costs			
England, Scotland & Wales		EU Directive 2002/91/EC	



Scan the QR code to find out more information about this property.

Floor plan produced in accordance with RICS Property Measurement 2nd Edition, Incorporating International Property Measurement Standards (IPMS2 Residential). © nchecom 2025. Produced for Charters Estate Agents Limited. REF: 1260739

SITUATION

Southampton is a thriving commercial port with a population in excess of 250,000 and achieved city status in 1964 due to its contribution to trade and the economy. The city centre offers an extensive range of shopping and leisure facilities ranging from small boutique outlets to major department stores including the landmark West Quay shopping mall. Restaurants, bars and cafes cater for every taste and the Cinema de lux offers the finest film viewing experience. Numerous pleasant parks together with The Common, City golf course and sports centre offer a wide range of leisure opportunities with hundreds of acres of green open space. Premier league football is played at St Marys and the Ageas Bowl is the home of Hampshire cricket hosting domestic and international matches together with live music events. The Guildhall, Mayflower and Nuffield theatres host a wide and eclectic range of plays, opera, ballet and musicals and the public art gallery in the civic centre has a famous and acclaimed collection.



SPECIFICATION

- Allocated parking and hardstanding to the front
- Two well proportioned bedrooms
- Generously sized rear garden
- Many original style features
- Two reception rooms
- Conservatory

LOCAL AUTHORITY

Southampton City Council
Council Tax Band B

ASKING PRICE £275,000

TENURE

Freehold