

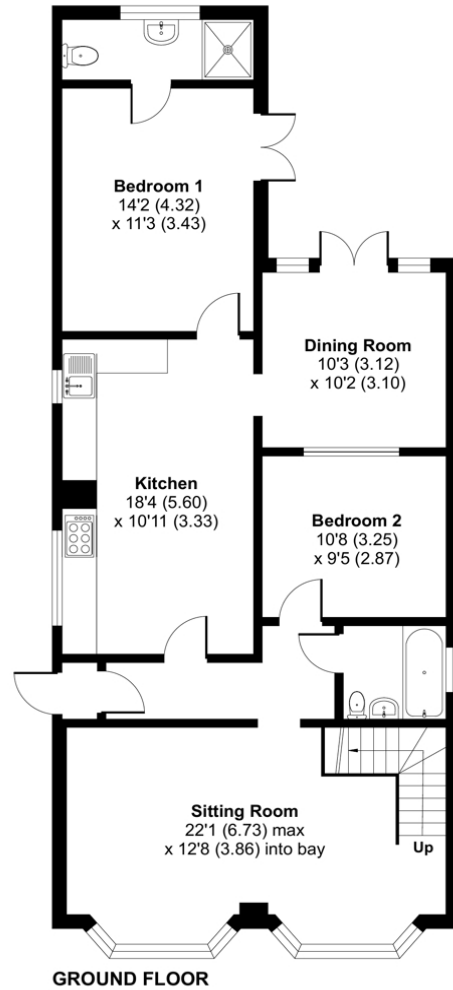


Belmont Road, Chandler's Ford, Eastleigh, Hampshire, SO53 3EU



ACCOMMODATION

Nestled in a convenient location, this delightful two-bedroom home offers an inviting blend of character and modern comfort. Bay windows and high ceilings create a bright and airy atmosphere, enhancing the well-proportioned accommodation. Upon entry, a welcoming hallway leads to the principal living areas. The stylish dining room/ conservatory is ideal for hosting and entertaining, and provides lovely garden views and direct access to the private outdoor space. The kitchen, equipped with a range of base unit. The spacious sitting room features two bay windows, and access to the loft room currently being used as a bedroom. Two generously sized double bedrooms offer peaceful retreats, the principal bedroom has its own appointed en-suite, with the other being served by a well-appointed family bathroom. This home offers a wide range of versatility with access to a well-equipped loft room. Outside, the beautifully maintained rear garden is a true highlight, boasting mature borders, a low maintenance garden. There is also a garden shed with full working mains electric. To the front, a well-established driveway provides ample off-road parking.



GROUND FLOOR

FIRST FLOOR

Approximate Area = 1123 sq ft / 104.3 sq m
For identification only - Not to scale



Energy Efficiency Rating		Current	Potential
Very energy efficient - lower running costs			
(92+)	A		
(81-91)	B		
(69-80)	C		77
(55-68)	D	55	
(39-54)	E		
(21-38)	F		
(1-20)	G		
Not energy efficient - higher running costs			
England, Scotland & Wales		EU Directive 2002/91/EC	



Scan the QR code to find out more information about this property.



Floor plan produced in accordance with RICS Property Measurement 2nd Edition, Incorporating International Property Measurement Standards (IPMS2 Residential). © nichecom 2025. Produced for Charters Estate Agents Limited. REF: 1262368



SITUATION

Set within the popular area of Chandler's Ford, approximately a 15-minute drive from the mesmerising cathedral city of Winchester and Southampton city. Chandler's Ford has a variety of shops, restaurants, traditional inns and schools. Winchester has many famous amenities and attractions. Communications are excellent with the M27, M3, A34, and A303 within easy reach and only a few minutes drive away. This provides access to London, New Forest and the South Coast. Set within the popular area of Chandler's Ford, approximately a 15-minute drive from the mesmerising cathedral city of Winchester and Southampton city. Chandler's Ford has a variety of shops, restaurants, traditional inns and schools. Winchester has many famous amenities and attractions. Communications are excellent with the M27, M3, A34, and A303 within easy reach and only a few minutes drive away. This provides access to London, New Forest and the South Coast.



SPECIFICATION

- Two double-bedroom bungalow
- Modern Shaker-style kitchen
- En-suite to the primary bedroom
- Family bathroom
- Loft room
- Private and enclosed garden
- Driveway parking

LOCAL AUTHORITY

Eastleigh Borough Council
Council Tax Band C

OFFERS IN EXCESS OF £350,000

TENURE

Freehold