



Brownhill Road, Chandler's Ford, Eastleigh, Hampshire, SO53 2FL





Brownhill Road, Chandler's Ford, Eastleigh, Hampshire, SO53 2FL

This exceptional property showcases high-quality fixtures and fittings, with modern interiors that exude exquisite craftsmanship, creating a light and airy atmosphere throughout.



- Exceptional detached family residence with beautifully presented accommodation throughout
- Sought-after location
- Impressive kitchen/diner and separate utility room
- Contemporary sitting room with feature fire
- Ground floor luxury family bathroom/cloakroom
- multi-generational living with four well-appointed bedrooms
- Principal bedroom with dressing room and en-suite shower room
- Manicured and private gardens
- Driveway parking and garage

t: 02382 358888

www.chartersestateagents.co.uk



ACCOMMODATION

This exceptional property showcases high-quality fixtures and fittings, with modern interiors that exude exquisite craftsmanship, creating a light and airy atmosphere throughout. Offering a wealth of versatile living spaces, the home welcomes you with a bright and inviting reception hall that seamlessly connects to all principal rooms with clever storage solutions. The beautifully designed sitting room features a striking fireplace, complemented by a fresh, contemporary aesthetic and doors that open onto a stunning patio, perfect for indoor-outdoor living. The impressive open-plan kitchen is fully fitted with sleek, bespoke storage solutions and stylish work surfaces, with a central peninsular that forms the heart of the home, making it a truly social and functional space. Designed for multigenerational living, the property offers two well-appointed ground-floor bedrooms, alongside two additional bedrooms on the first floor. The principal suite benefits from a dressing room and a luxurious en-suite shower room, providing an indulgent retreat. Bedroom two, with its charming curved bay window, enjoys an abundance of natural light and is served by the elegant family bathroom. Further enhancing the ground-floor accommodation is a dedicated home office, a practical utility room, and a guest shower room/cloakroom, all finished to the highest standards. A staircase leads to the first floor, where two spacious double bedrooms are complemented by a modern shower room. Externally, the private enclosed garden has been meticulously landscaped and manicured to perfection. A magnificent patio area offers an ideal setting for al fresco dining, with views of the mature gardens beyond. To the front, an elegant driveway provides ample parking for multiple vehicles and leads to a single garage, completing this outstanding residence.



SITUATION

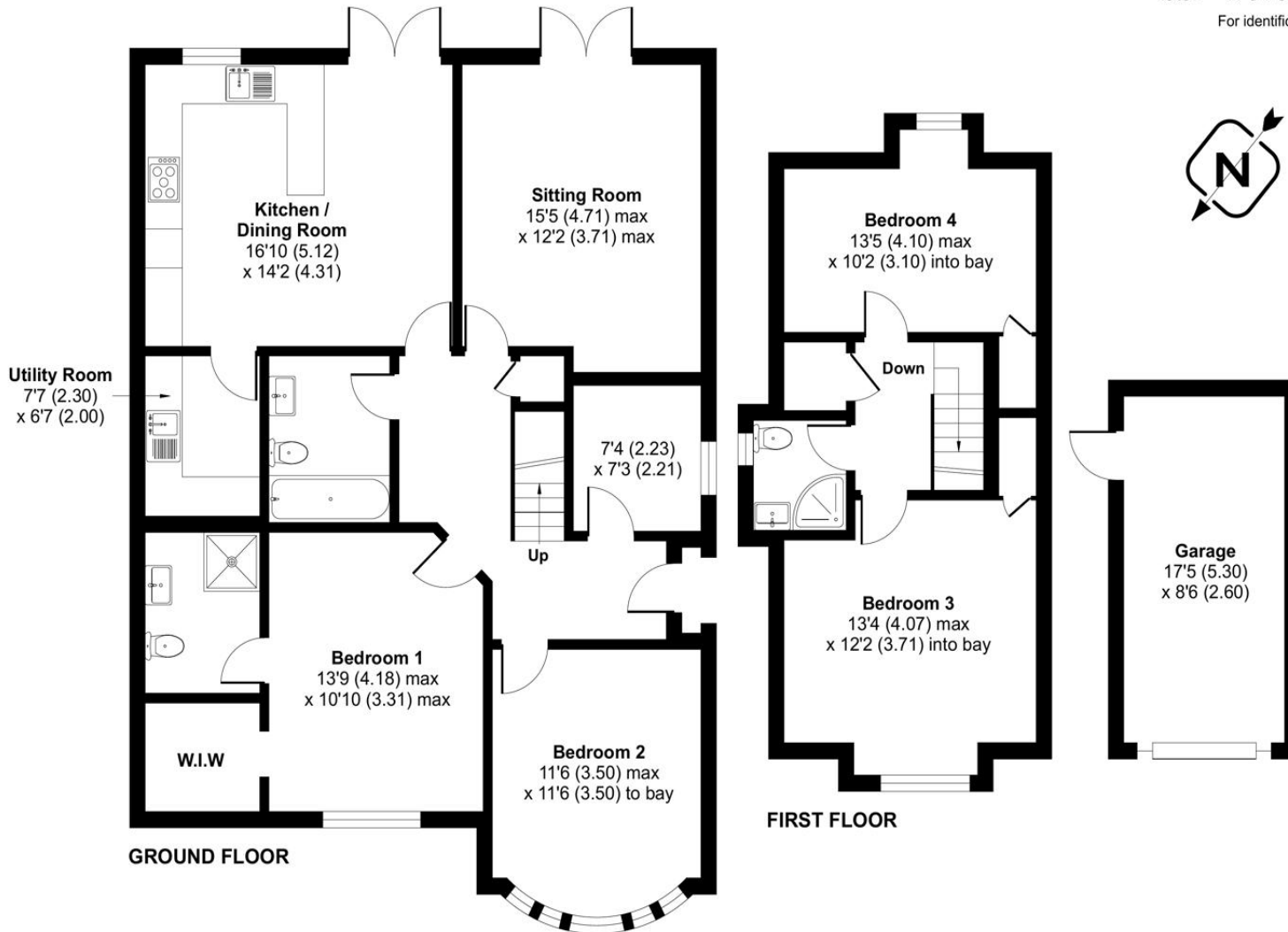
Chandler's Ford is a popular Hampshire town with a variety of shops, restaurants, traditional inns and with Chilworth golf course is also within easy reach. This home is within easy reach of fantastic schools and allows for both coast and country lifestyle pursuits all within striking distance as the town is well placed for the South Downs National Park and The New Forest. It is approximately a 15-minute drive to Winchester and a 17-minute drive to Southampton, both cities have an extensive range of facilities. Communications are excellent with the M3 and M27 nearby and the railway station has links to Winchester and Southampton; London Waterloo is 57 minutes from Winchester and 65 minutes from Southampton Parkway.





Approximate Area = 1556 sq ft / 144.6 sq m
 Garage = 148 sq ft / 13.7 sq m
 Total = 1704 sq ft / 158.3 sq m

For identification only - Not to scale



Energy Efficiency Rating		
	Current	Potential
Very energy efficient - lower running costs		
(92+) A		
(81-91) B		
(69-80) C		77
(55-68) D	50	
(39-54) E		
(21-38) F		
(1-20) G		
Not energy efficient - higher running costs		
England, Scotland & Wales	EU Directive 2002/91/EC	



Scan the QR code to find out more information about this property.





LOCAL AUTHORITY

Eastleigh Borough Council
Council Tax Band E

GUIDE PRICE £800,000

TENURE

Freehold