



Idsworth Road, Portsmouth, Hampshire, PO3 6NL





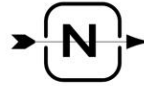
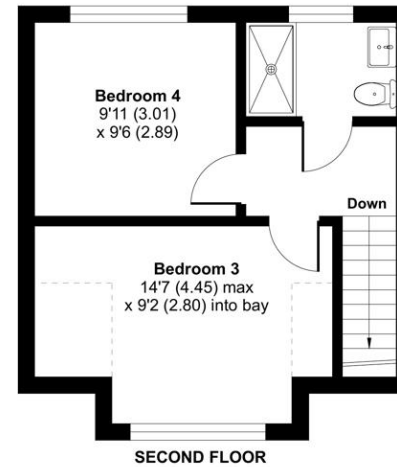
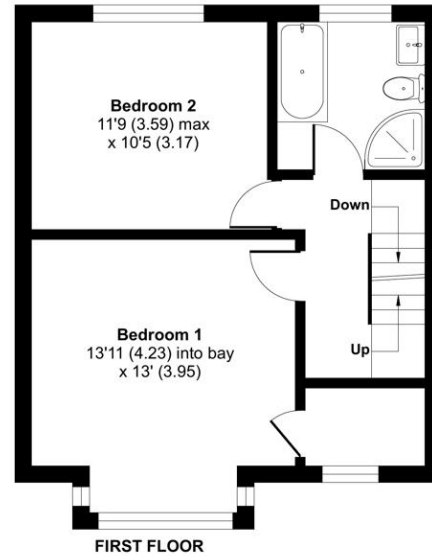
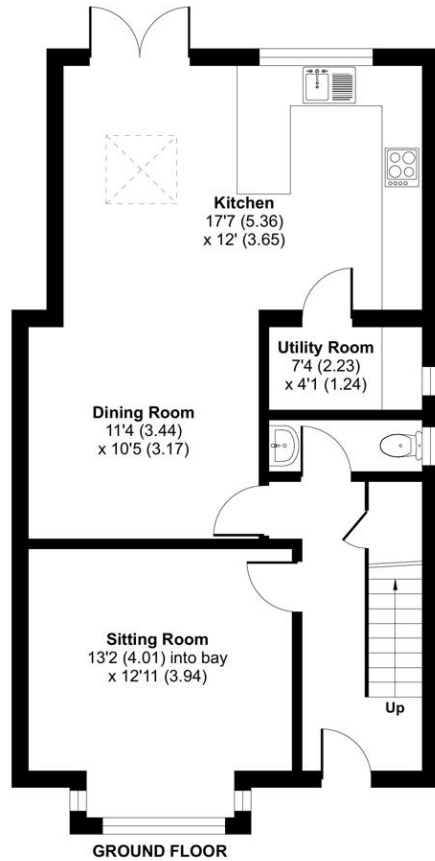
## ACCOMMODATION

Situated on the ever-popular Idsworth Road, this stunning four-bedroom semi-detached home offers spacious and modern living over three floors. Boasting off-street parking and a host of stylish upgrades, this property is perfect for families or professionals looking for a turnkey home in a well-connected location. The ground floor features a bright and welcoming sitting room with a bay window, a separate dining room, and a contemporary open-plan kitchen that opens onto the rear garden – ideal for entertaining and family gatherings. A practical utility room and downstairs WC complete this level. Upstairs on the first floor, you'll find two generously sized double bedrooms and a modern family bathroom. The second floor offers two additional bedrooms and a sleek shower room, perfect for guests or growing families. This home has been tastefully modernised throughout, combining character with quality finishes to create a truly inviting space. Located close to local amenities, schools, and transport links, it offers both comfort and convenience in equal measure.

Approximate Area = 1398 sq ft / 129.8 sq m  
 Limited Use Area(s) = 27 sq ft / 2.5 sq m  
 Total = 1425 sq ft / 132.3 sq m

For identification only - Not to scale

Denotes restricted head height



Energy Efficiency Rating		Current	Potential
Very energy efficient - lower running costs			
(92+)	A		
(81-91)	B		
(69-80)	C		
(55-68)	D		
(39-54)	E		
(21-38)	F		
(1-20)	G		
Not energy efficient - higher running costs			
England, Scotland & Wales		EU Directive 2002/91/EC	
		70	83



Scan the QR code to find out more information about this property.

Floor plan produced in accordance with RICS Property Measurement 2nd Edition, Incorporating International Property Measurement Standards (IPMS2 Residential). © nichecom 2025. Produced for Charters Estate Agents Limited. REF: 1269954



## SITUATION

Idsworth Road is nestled in a quiet and charming residential area of Portsmouth, offering a perfect blend of suburban tranquility and city convenience. With excellent transport links, residents can easily access local amenities, shops, and schools. The road's close proximity to green spaces, parks, and the vibrant city centre makes it an ideal location for families and professionals alike. Whether you're enjoying a stroll along nearby scenic paths or exploring Portsmouth's rich history, Idsworth Road provides a welcoming and well-connected community.





### **SPECIFICATION**

- Beautifully upgraded four-bedroom semi-detached home
- Modern interior with stylish finishes throughout
- Private rear garden – ideal for relaxing or entertaining
- Off-street parking for added convenience
- Close to local amenities, schools, and transport links
- Move-in ready with no work required

### **LOCAL AUTHORITY**

Portsmouth City Council  
Council Tax Band C

**ASKING PRICE £415,000**

### **TENURE**

Freehold